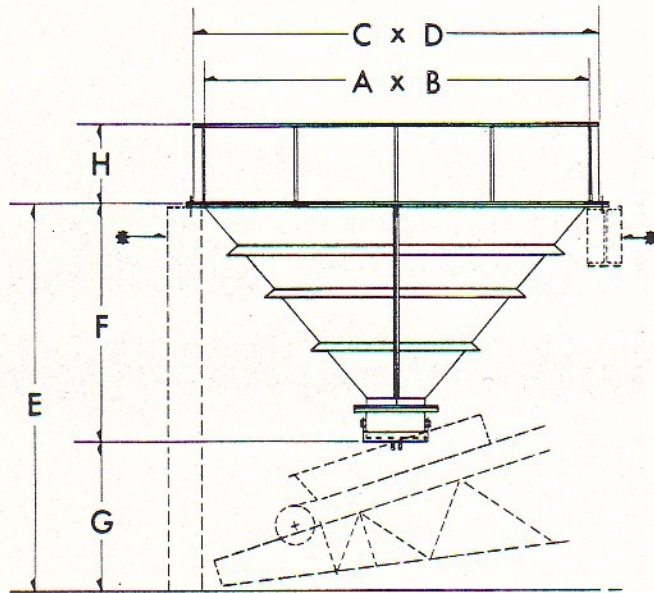
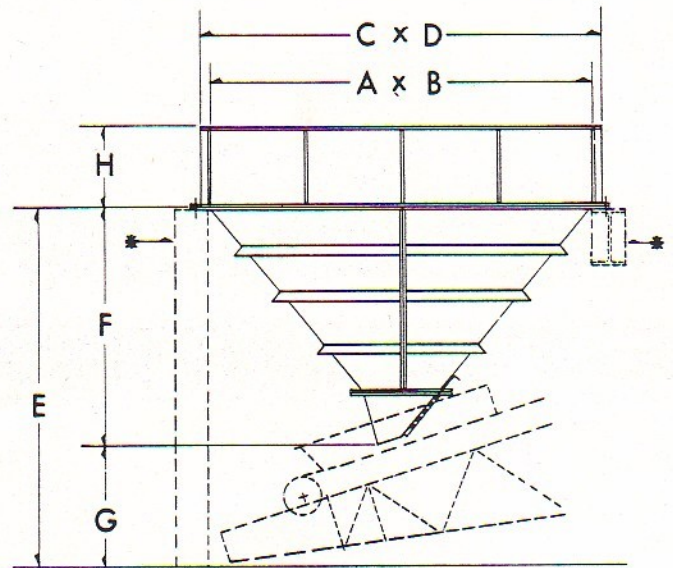


## MODEL 900 TRUCK HOPPERS-FLANGE MOUNTED



WITH CLAMSHELL GATE



WITH MANUAL SLIDE GATE

### TRUCK HOPPERS-CAPACITIES AND DIMENSIONS

A x B (Size)	Model No.	C x D (Overall)	E	Clamshell Gate		Slide Gate		†Struck Capacity		†Heaped Capacity		Wgt., Lbs.	
				F	G	F	G	Yards	Tons	Yards	Tons	Hopper	Liners
8' x 8'	900-0808	8'-6 <sup>3</sup> / <sub>4</sub> " x 8'-6 <sup>3</sup> / <sub>4</sub> "	8'-8 <sup>3</sup> / <sub>4</sub> "	4'-11 <sup>1</sup> / <sub>8</sub> "	3'-9 <sup>5</sup> / <sub>8</sub> "	4'-11 <sup>1</sup> / <sub>8</sub> "	3'-9 <sup>5</sup> / <sub>8</sub> "	3.8	5.6	6.5	9.6	1245	700
10' x 10'	900-1010	10'-6 <sup>3</sup> / <sub>4</sub> " x 10'-6 <sup>3</sup> / <sub>4</sub> "	10'-1 <sup>3</sup> / <sub>4</sub> "	6'-1 <sup>1</sup> / <sub>8</sub> "	3'-11 <sup>1</sup> / <sub>8</sub> "	6'-1 <sup>1</sup> / <sub>8</sub> "	4'-0 <sup>5</sup> / <sub>8</sub> "	7.4	11.0	12.6	18.8	1790	1120
12' x 9'	900-1209	12'-6 <sup>3</sup> / <sub>4</sub> " x 9'-6 <sup>3</sup> / <sub>4</sub> "	11'-1 <sup>3</sup> / <sub>4</sub> "	7'-4 <sup>1</sup> / <sub>2</sub> "	3'-9 <sup>1</sup> / <sub>2</sub> "	7'-3 <sup>3</sup> / <sub>4</sub> "	3'-10"	9.5	14.1	15.4	22.9	3380	1395
12' x 12'	900-1212	12'-6 <sup>3</sup> / <sub>4</sub> " x 12'-6 <sup>3</sup> / <sub>4</sub> "	11'-1 <sup>3</sup> / <sub>4</sub> "	7'-4 <sup>1</sup> / <sub>2</sub> "	3'-9 <sup>1</sup> / <sub>2</sub> "	7'-3 <sup>3</sup> / <sub>4</sub> "	3'-10"	12.7	18.8	21.6	32.0	3775	1670
14' x 9'	900-1409	14'-6 <sup>3</sup> / <sub>4</sub> " x 9'-6 <sup>3</sup> / <sub>4</sub> "	12'-1 <sup>3</sup> / <sub>4</sub> "	8'-6 <sup>1</sup> / <sub>8</sub> "	3'-7 <sup>3</sup> / <sub>8</sub> "	8'-6 <sup>1</sup> / <sub>8</sub> "	3'-7 <sup>1</sup> / <sub>8</sub> "	12.9	19.2	18.9	28.1	4450	1800
14' x 14'	900-1414	14'-6 <sup>3</sup> / <sub>4</sub> " x 14'-6 <sup>3</sup> / <sub>4</sub> "	12'-1 <sup>3</sup> / <sub>4</sub> "	8'-6 <sup>1</sup> / <sub>8</sub> "	3'-7 <sup>3</sup> / <sub>8</sub> "	8'-6 <sup>1</sup> / <sub>8</sub> "	3'-7 <sup>1</sup> / <sub>8</sub> "	20.1	29.8	34.6	51.3	5290	2215

### VERTICAL SIDE EXTENSIONS-CAPACITIES AND DIMENSIONS

A x B (Size)	H = 1'-0" Extension			H = 1'-6" Extension			H = 2'-0" Extension			H = 2'-6" Extension			H = 3'-0" Extension		
	†Struck Capacity Yards	Tons	Wgt., lbs.	†Struck Capacity Yards	Tons	Wgt., lbs.	†Struck Capacity Yards	Tons	Wgt., lbs.	†Struck Capacity Yards	Tons	Wgt., lbs.	†Struck Capacity Yards	Tons	Wgt., lbs.
8' x 8'	2.4	3.5	525	3.6	5.3	675	4.8	7.0	830	6.0	8.8	975	7.2	10.6	1125
10' x 10'	3.7	5.5	660	5.6	8.3	840	7.4	11.0	1020	9.3	13.8	1205	11.1	16.5	1385
12' x 9'	4.0	5.9	710	6.0	8.9	900	8.0	11.9	1090	10.0	14.9	1285	12.0	17.8	1475
12' x 12'	5.3	7.9	810	8.0	11.8	1030	10.6	15.8	1245	13.3	19.8	1465	15.9	23.8	1680
14' x 9'	4.7	6.9	950	7.1	10.5	1210	9.4	13.9	1470	11.6	17.4	1725	14.1	20.8	1985
14' x 14'	7.3	10.7	1295	11.0	16.2	1645	14.6	21.6	2000	18.3	27.0	2350	21.9	32.3	2700

\*Indicates Concrete and/or Structural Support - not included.

■ Based on 16" x 16" Manual Clamshell Gate. Other Gate sizes may alter these dimensions slightly.

†Capacities based on 110# per cu. ft. material and, where heaped, 40° Angle of Repose.

### GENERAL SPECIFICATIONS

Frustum only - equipped with Flange for mounting on Concrete, or Steel Structure. Sloping sides are 50° for rapid self-cleaning. Split Frustum and bolted construction permit "nesting" for truck transportation. All 8' x 8' and 10' x 10' Frustums are fabricated of 3/16" Plate. Larger sizes are of 1/4" Plate. All Side Extensions are fabricated of 3/16" Plate, except for 14' x 9' and 14' x 14' which are of 1/4" Plate.

All specifications shown are subject to change without notice.

SS900-4