

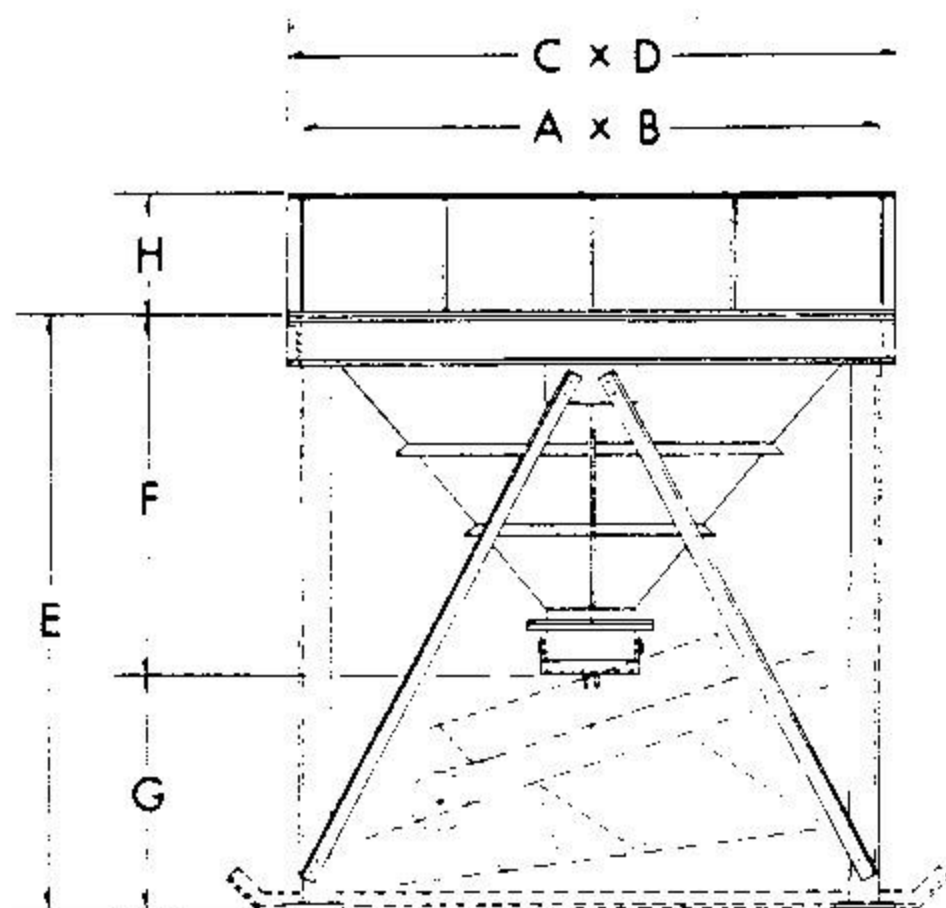


CONTINENTAL MANUFACTURING COMPANY

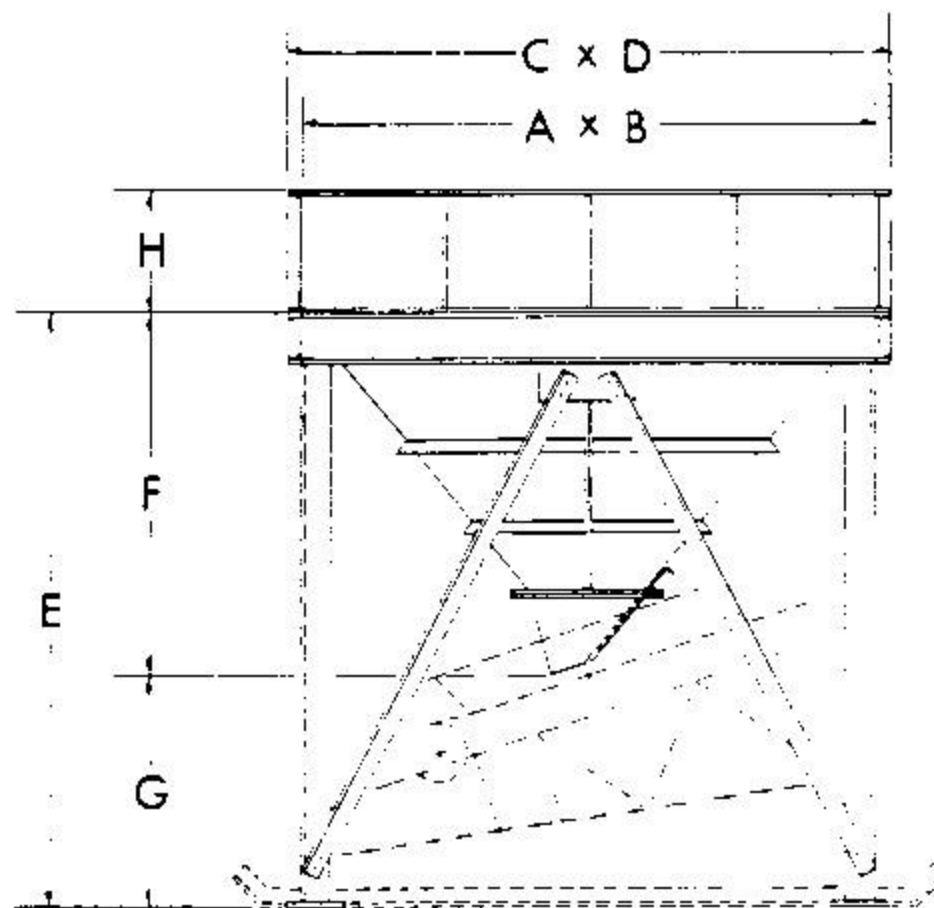
SPEC

SHEET

**MODEL 920 SHOVEL LOADING HOPPERS
-WITH SUPPORTING STRUCTURE**



WITH CLAMSHELL GATE



WITH MANUAL SLIDE GATE

SHOVEL LOADING HOPPERS-CAPACITIES AND DIMENSIONS

A x B (Size)	Model No. ^Δ	C x D (Overall)	E	Clamshell Gate		Slide Gate		†Struck Capacity		†Heaped Capacity		Wgt., Lbs.	
				F	G	F	G	Yards	Tons	Yards	Tons	Hopper	Liners
8' x 8'	920-0808	8'-6 3/4" x 8'-6 3/4"	8'-8 3/4"	4'-11 1/8"	3'-9 3/8"	4'-11 1/8"	3'-9 3/8"	3.8	5.6	6.5	9.6	2885	700
10' x 10'	920-1010	10'-6 3/4" x 10'-6 3/4"	10'-1 3/4"	6'-1 1/8"	3'-11 1/8"	6'-1 1/8"	4'-0 5/8"	7.4	11.0	12.6	18.8	3835	1120
12' x 9'	920-1209	12'-6 3/4" x 9'-6 3/4"	11'-1 3/4"	7'-4 1/4"	3'-9 1/2"	7'-3 3/4"	3'-10"	9.5	14.1	15.4	22.9	5620	1395
12' x 12'	920-1212	12'-6 3/4" x 12'-6 3/4"	11'-1 3/4"	7'-4 1/4"	3'-9 1/2"	7'-3 3/4"	3'-10"	12.7	18.8	21.6	32.0	6155	1670
14' x 9'	920-1409	14'-6 3/4" x 9'-6 3/4"	12'-1 3/4"	8'-6 5/8"	3'-7 3/8"	8'-6 5/8"	3'-7 1/8"	12.9	19.2	18.9	28.1	9430	1800
14' x 14'	920-1414	14'-6 3/4" x 14'-6 3/4"	12'-1 3/4"	8'-6 5/8"	3'-7 3/8"	8'-6 5/8"	3'-7 1/8"	20.1	29.8	34.6	51.3	10,805	2215

VERTICAL SIDE EXTENSIONS-CAPACITIES AND DIMENSIONS

A x B (Size)	H = 1'-0" Extension			H = 1'-6" Extension			H = 2'-0" Extension			H = 2'-6" Extension			H = 3'-0" Extension		
	†Struck Capacity Yards	Tons	Wgt., lbs.	†Struck Capacity Yards	Tons	Wgt., lbs.	†Struck Capacity Yards	Tons	Wgt., lbs.	†Struck Capacity Yards	Tons	Wgt., lbs.	†Struck Capacity Yards	Tons	Wgt., lbs.
8' x 8'	2.4	3.5	525	3.6	5.3	675	4.8	7.0	830	6.0	8.8	975	7.2	10.6	1125
10' x 10'	3.7	5.5	660	5.6	8.3	840	7.4	11.0	1020	9.3	13.8	1205	11.1	16.5	1385
12' x 9'	4.0	5.9	710	6.0	8.9	900	8.0	11.9	1090	10.0	14.9	1285	12.0	17.8	1475
12' x 12'	5.3	7.9	810	8.0	11.8	1030	10.6	15.8	1245	13.3	19.8	1465	15.9	23.8	1680
14' x 9'	4.7	6.9	950	7.1	10.5	1210	9.4	13.9	1470	11.6	17.4	1725	14.1	20.8	1985
14' x 14'	7.3	10.7	1295	11.0	16.2	1645	14.6	21.6	2000	18.3	27.0	2350	21.9	32.3	2700

^ΔModel No. with Base Plates incorporates -B as a suffix, i.e., 920-0808-B. For Steel Skids, use suffix -S.

■Based on 16" x 16" Manual Clamshell Gate. Other Gate sizes may alter these dimensions slightly.

†Capacities based on 110# per cu. ft. material and, where heaped, 40° Angle of Repose.

GENERAL SPECIFICATIONS

Shovel Loading Hoppers are equipped with Supporting Structure of bolted construction to permit truck transportation. Sloping sides are 50° for rapid self-cleaning. Available with Base Plates, or Steel Skids. All 8' x 8' and 10' x 10' Frustums are fabricated of 3/16" Plate. Larger sizes are of 1/4" Plate. All Side Extensions are fabricated of 3/16" Plate, except for 14' x 9' and 14' x 14' which are of 1/4" Plate.

All specifications shown are subject to change without notice.

SS920-4