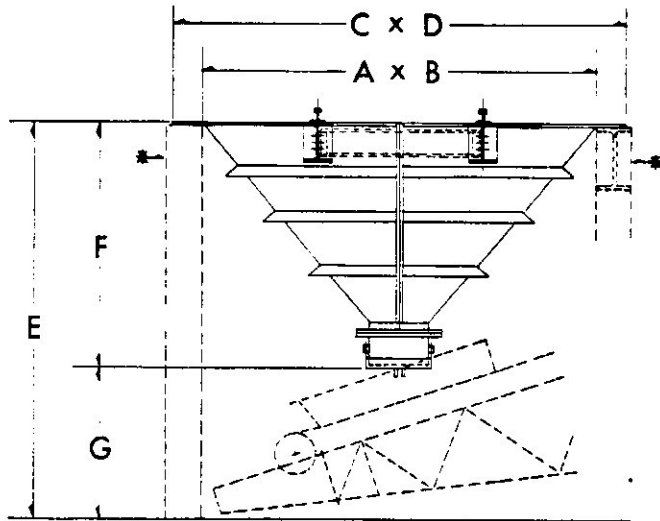


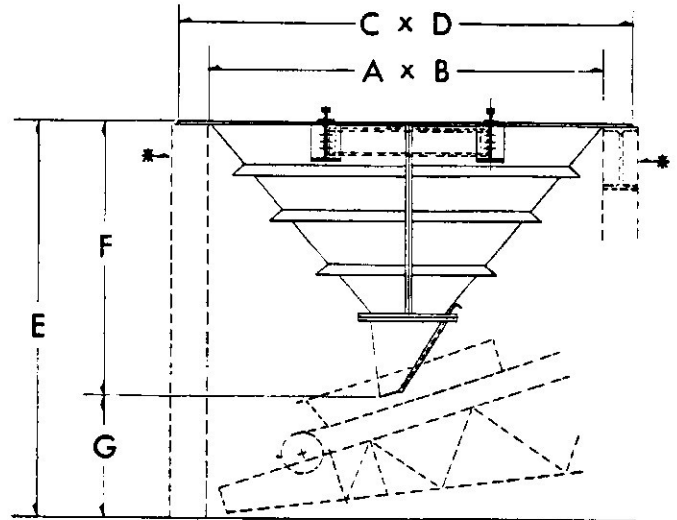


SPEC SHEET

MODEL 950 RAIL HOPPERS - WITH BEAMS



WITH CLAMSHELL GATE



WITH MANUAL SLIDE GATE

RAIL HOPPERS - CAPACITIES AND DIMENSIONS

A x B (Size)	Model No.	Rail Beams	C x D (Overall)	E	■ Clamshell Gate		Slide Gate		†Struck Capacity		Wgt., Lbs.	
					F	G	F	G	Yards	Tons	Hopper	Liners
10' x 10'	950-1010	W14 x 68	10'-6 $\frac{3}{4}$ " x 10'-6 $\frac{3}{4}$ "	10'-1 $\frac{3}{4}$ "	6'-1 $\frac{15}{16}$ "	3'-11 $\frac{3}{16}$ "	6'-1 $\frac{15}{16}$ "	4'-0 $\frac{0}{16}$ "	7.4	11.0	3960	1120
12' x 9'	950-1209	W14 x 74	12'-6 $\frac{3}{4}$ " x 9'-6 $\frac{3}{4}$ "	11'-1 $\frac{3}{4}$ "	7'-4 $\frac{1}{2}$ "	3'-9 $\frac{1}{2}$ "	7'-3 $\frac{3}{4}$ "	3'-10"	9.5	14.1	5900	1390

*Indicates Concrete and/or Structural Support - not included.

■ Based on 16" x 16" Manual Clamshell Gate. Other Gate sizes may alter these dimensions slightly.

†Capacities based on 110# per cu. ft. material and, where heaped, 40° Angle of Repose.

GENERAL SPECIFICATIONS

Frustum design has 50° sloping sides for rapid self-cleaning. Rail Beams and Spreaders are designed to American Institute of Steel Construction (AISC) Specifications and Cooper's E70 Rail Loading, with 25% impact. Beams are recessed within the Frustum to reduce the depth of pit. Split frustum and bolted construction permit "nesting" for truck transportation.

Rail Beam size subject to Railroad approval. As an option, special designs are available where heavier beams are required.